



# MONTHLY MEMBERSHIP PROGRESS REPORT

District 323E2

Results as of: 8/31/2015

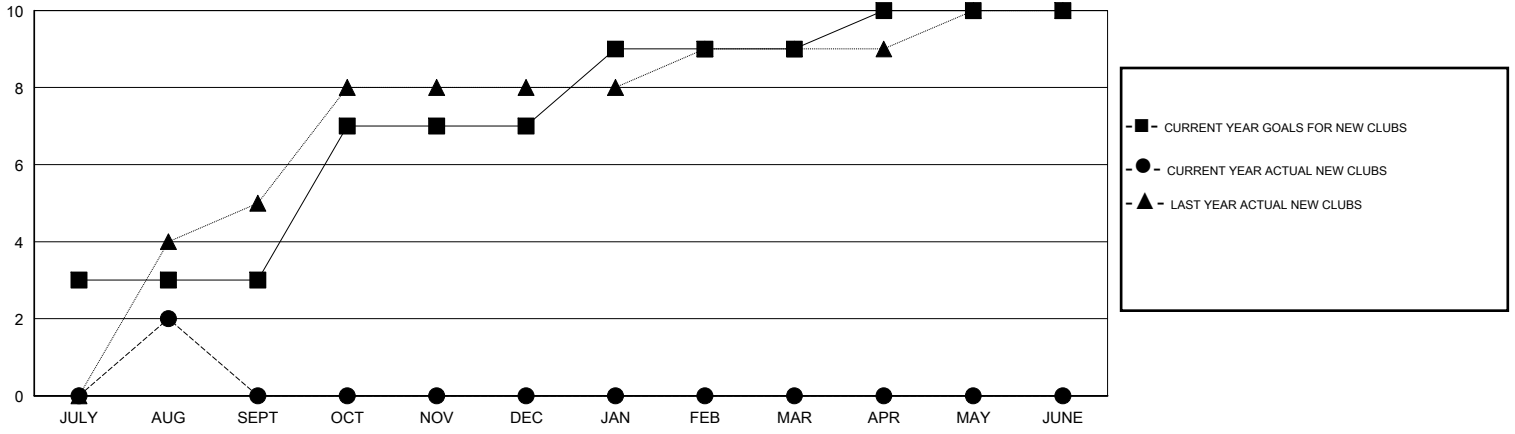
GMT: KAMLESH JAIN

LOCATION INDIA

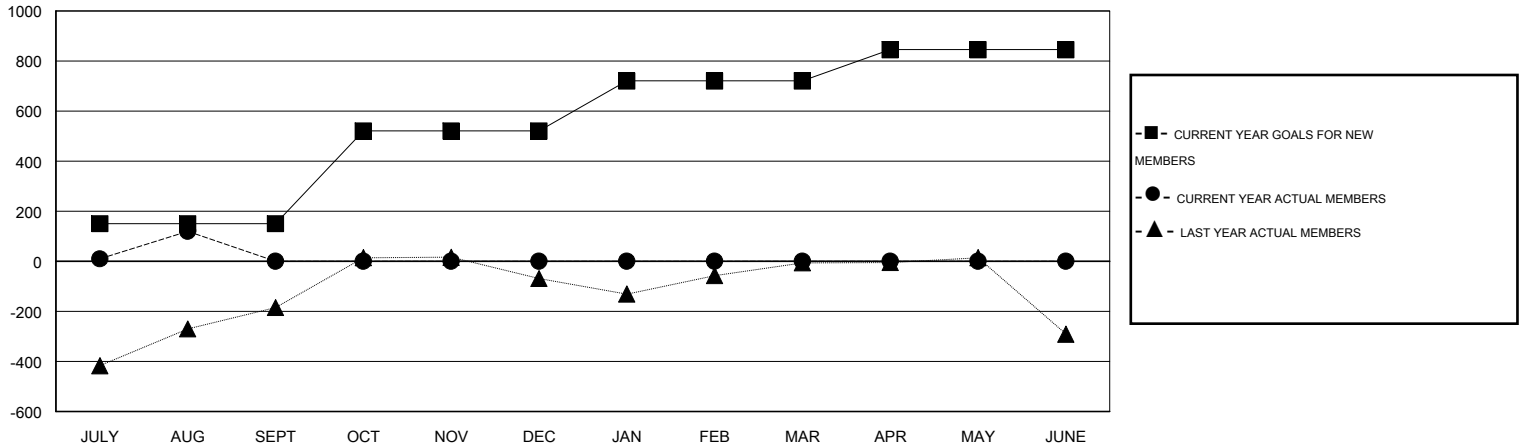
GMT CA 6

Clubs					Members				
RESULTS FOR 2015-2016					RESULTS FOR 2015-2016				
QUARTER	NEW CLUB GOAL	NEW CLUBS	DROPPED CLUBS	NET GAIN/LOSS	QUARTER	NEW MEMBER GOAL	CHARTER AND NEW MEMBERS ADDED	DROPPED MEMBERS	NET GAIN/LOSS
JULY/AUG/SEPT	3	2	1	1	JULY/AUG/SEPT	150	266	146	120
OCT/NOV/DEC	4	0	0	0	OCT/NOV/DEC	370	0	0	0
JAN/FEB/MAR	2	0	0	0	JAN/FEB/MAR	200	0	0	0
APR/MAY/JUNE	1	0	0	0	APR/MAY/JUNE	125	0	0	0

GOALS AND ACTUAL NEW CLUBS CUMULATIVE



GOALS AND ACTUAL MEMBERS CUMULATIVE



DROPPED CLUBS: 1	43 CLUBS OF 133 ADDED 1 OR MORE NEW MEMBERS	<u>GENDER DISTRIBUTION</u>							
<u>DROPPED MEMBERS</u>		MALE	4,581 (83.84%)						
DECEASED	1	FEMALE	883 (16.16%)						
CLUB CANCELLED	0	<table border="1"> <tr> <td>FAMILY UNIT MEMBERS</td> <td>1,467</td> </tr> <tr> <td>HEAD OF HOUSEHOLD</td> <td>688</td> </tr> <tr> <td>NON-HEAD OF HOUSEHOLD</td> <td>779</td> </tr> </table>		FAMILY UNIT MEMBERS	1,467	HEAD OF HOUSEHOLD	688	NON-HEAD OF HOUSEHOLD	779
FAMILY UNIT MEMBERS	1,467								
HEAD OF HOUSEHOLD	688								
NON-HEAD OF HOUSEHOLD	779								
OTHER	145	<a href="#">CLICK HERE FOR HEALTH ASSESSMENT DATA</a>							
TOTAL	146								